

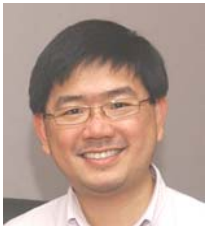
1. Course Lecturers CV



Dr Steve Oh

Dr Steve Oh Kah Weng is a Senior Scientist & Associate Director at the Bioprocessing Technology Institute (BTI) specialising in embryonic stem cell and fermentation research. Together with Dr. Andre Choo, they started the Stem Cell Group at BTI in

2001 focusing on human stem cell research. His area of interest include the development of serum free and feeder free cultures, understanding the signalling pathways of hESC, development of new tools for monitoring hESC and the identification of teratomas and methods for the expansion of hESC. He is a frequent invited speaker at local and international meetings and a member of several scientific societies.



Dr Andre Choo

Dr Andre Choo Boon Hwa obtained his PhD in 2001 focusing on the molecular engineering of antibody fragments and immunotoxins. He was also involved in the identification and characterization of a monoclonal antibody that induced apoptosis

of kappa- myelomas. This work has resulted in the filing of a Patent for its novel application and the setting up of a spin-off company to develop the product as a therapeutic antibody. Moving back to Singapore, he has been actively involved in developing defined culture platforms for the scale-up of human embryonic stem cells (hESC). This included the derivation of immortal feeders that support hESC expansion. More recently, his group has also raised a panel of monoclonal antibodies to hESC surface markers which has applications for characterization and isolation of undifferentiated hESC.

To Register - EMAIL or FAX to:

Professional Activities Centre
Faculty of Engineering
National University of Singapore
9 Engineering Drive 1
Blk EA #05-34 Singapore 117576
Fax: (65) 6874 5097
Website: <http://www.eng.nus.edu.sg/PACentre>

- Enquiries:** Please contact Anna Robinson for more information at Tel: (65) 6516 5113 or e-mail: engannar@nus.edu.sg
- Fee :** Singapore participants: SGD 400.00 + Prevailing GST
Overseas participants: SGD 400.00 (GST exempted)
- Payment :** Payment is required prior to the course. Crossed cheques should be made payable to "National University of Singapore" and mailed together with the registration form to the mentioned address.
- Discount :** Maximum of 10% discount is applicable to:
- Employees of the NUS Technology Associates registered with INTRO (Industry and Technology Relations Office);
 - NUS Alumni
 - Organisations / Companies sending three or more participants.

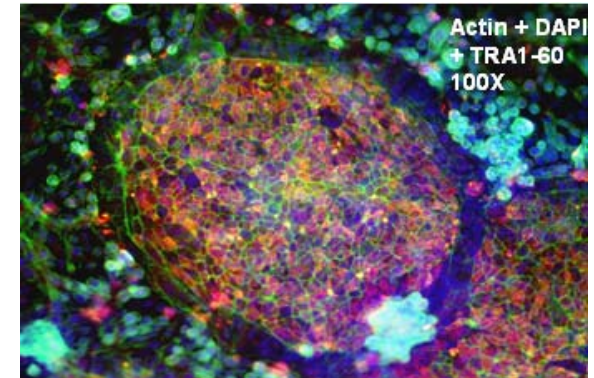
Refunds and Cancellations :

A 50% refund will be made for withdrawals (received in writing) ten working days before the commencement of the course. No refunds will be made thereafter. However, a replacement will be accepted upon prior arrangement at no extra cost. Please inform us of the changes, if any, by fax.

The Professional Activities Centre reserves the right to cancel the course and fully refund the participants, should unforeseen circumstances warrant it. Every effort will be made to inform participants of any changes.



HUMAN EMBRYONIC STEM CELL COURSE



by

Dr. Steve Oh & Dr. Andre Choo
BIOPROCESSING TECHNOLOGY INSTITUTE

DATE: 28 MAY 2007
TIME: 9.00AM – 5.00PM
VENUE: National University of Singapore

Organised by:
Professional Activities Centre
National University of Singapore
Faculty of Engineering

